



Gelida

INTELLIGENT INNOVATION OF LIQUID NITROGEN TANKS

Gelida 47: Intelligent, integrated liquid nitrogen storage ecosystem with 24/7 monitoring



GELIDA 47

Liquid Nitrogen Storage Ecosystem



Real-time monitoring for temperature and LN2



Instant audio, visual and digital alarms



Patient and sample tracking software enabling remote alarm



Mobile Tank Management with PDA & App



One or Two-Person Access Authentication



Centralised management via BaseStation software



Model

Gelida 47 for Straws
Gelida 47 for Vials

Capacity

47 L (10 canisters
/ 6 box racks)

Net weight

Approx 20 kg

Battery life

Up to 15 days

Touch screen

5 inch color touch display

Storage temperature

-196° C Liquid Phase LN2

- **Enhanced Security:**

- Single or dual person authenticated tank access.
- Alerts via audio, visual and BaseStation App notification.

- **Peace of Mind:**

- Real time monitoring and reporting of tank fleet status with BaseStation.
- Automatic logging of tank access, alarms and warnings.

- **Connected Control:**

- Mobile management with PDA and App.
- Centrally manage storage via BaseStation link to Gelida Ecosystem devices.

- **Wireless:**

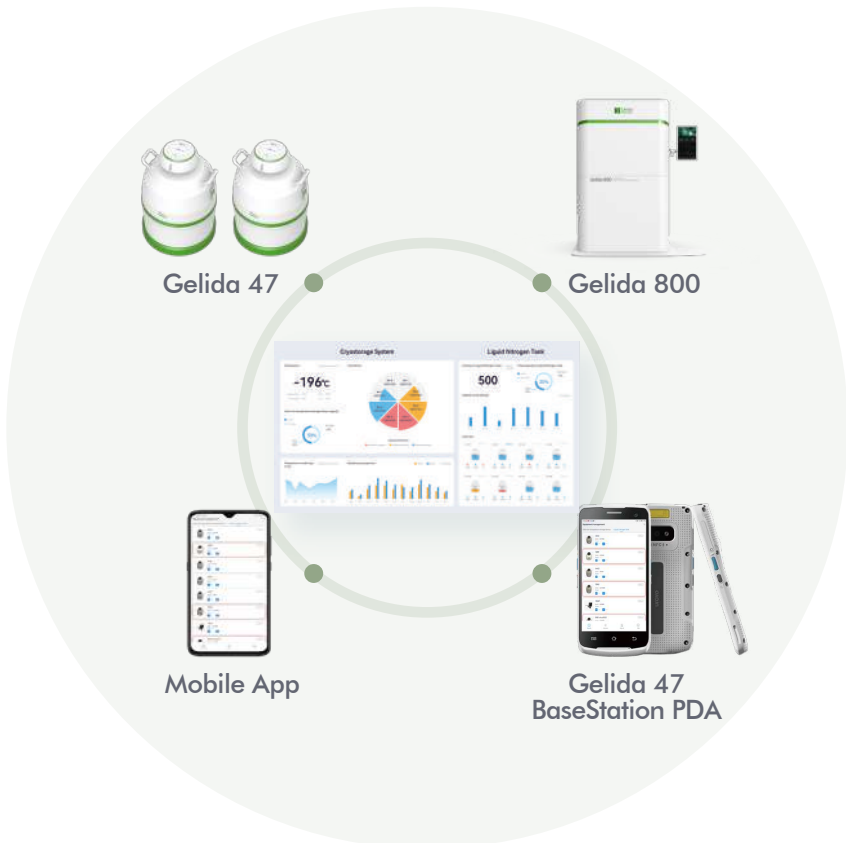
- Lid designed with quick swap battery, WiFi and integrated digital temperature sensors reducing external wiring.

- **Dual Sensors:**

- Two temperature sensors within the tank enables security and estimation of LN2 levels.

- **Convenience:**

- Touchscreen enables in person access, and quick recall tank condition and status.



GELIDA 47 CONFIGURATIONS

MODEL	GELIDA 47 (STRAWES)	GELIDA 47 (VIALS)
Capacity (L)	47	
Bare weight	~20 kg (44 Lbs)	
Full weight	~58 kg (128 Lbs)	
Neck Diameter	127 mm (5 inch)	
Outer diameter	Approx 500 mm (19.685 inch)	
Height	Approx 710 mm (27.95 inch)	
Storage Container Type For the straws, LxDiameter and vials DxWxH	Canister 278 x 72 mm 10.95 x 2.83 inch	Rack Box Size 78 x 78 x 59 mm 3.07 x 3.07 x 2.32 inch
Amount	10	6
Screen size	5.0-inch colour 1280 × 720 capacitive multi touch	
Power supply	Battery: 5VDC Lithium Polymer Battery Charging Adapter: 100-240V~,50/60Hz,0.5A	
Unlocking mode	Digital password lock (single/dual authentication) Emergency access key	
Operation log	Automatic Recording	
Alarms	Abnormal temperature Low battery/loss of electricity Excessive tank open time	
Mode of data transmission	WiFi 802.11b/g/n AES-256 encryption algorithm	
Number of temperature sensors	2 High position and Low position within tank dewar	

PRODUCT NAME	TYPE	CONFIGURATION
Gelida 47 (Straws)	Instrument	10 Canisters
Gelida 47 (Vials)	Instrument	6 Racks
Gelida 47 Charging Hub	Instrument	Charging slots for up to 5 batteries
Gelida 47 Battery	Accessory	1 Spare Battery

Specifications for USA market are subject to regulatory approval and final product release.

GELIDA 47 BASESTATION SYSTEM

GELIDA BASESTATION SOFTWARE

All your cryotank information, visualised in one place. Centralised management and monitoring enables quickly view the temperatures, capacity, battery level, and alarms. Through the interface devices can be remotely controlled and located; features include remote single/batch unlocking, and find my tank.

Through the interface, devices can be remotely controlled and located; features include remote single/batch unlocking and find my tank.



BASESTATION APP

Remote Monitoring & digitised alerts.

The BaseStation APP can be installed on Android mobile devices, enabling faster notification and response when abnormal conditions arise. Remotely view tank status, such as tank temperature, capacity, notification and alarm information.



GELIDA BASESTATION PDA

BaseStation features in the palm of your hand.

The BaseStation PDA is a BaseStation Workstation you can take with you. Enabling all monitoring functions, but additionally adding tank control functions and sample management functionality. Create sample deposit and withdrawal orders, and identify sample location on the screen; the inbuilt precision saves time and supports error reduction efforts.



ID	Name	Location	Capacity	Status	Alerts	Access	History	Settings
1001	Device A	Lab 1	100L	OK	None	10	2023-10-27	Admin
1002	Device B	Lab 2	150L	Warning	Low Capacity	5	2023-10-26	Admin
1003	Device C	Lab 3	200L	OK	None	15	2023-10-25	Admin
1004	Device D	Lab 4	120L	Alert	High Temp	2	2023-10-24	Admin
1005	Device E	Lab 5	80L	OK	None	8	2023-10-23	Admin

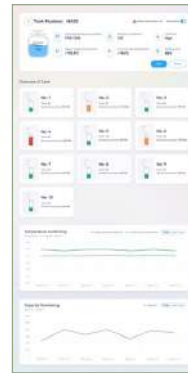
Device Management: Add, remove or edit basic device information, view tank capacity, tank status information, alarms, and retrieve access/operation records.

Sample ID	Device	Location	Volume	Freezing Time	Access Log	Status
S-001	Device A	Lab 1	50ml	2023-10-27 10:00	Admin	OK
S-002	Device B	Lab 2	75ml	2023-10-26 14:30	Admin	Warning
S-003	Device C	Lab 3	100ml	2023-10-25 09:15	Admin	OK
S-004	Device D	Lab 4	125ml	2023-10-24 16:45	Admin	Alert
S-005	Device E	Lab 5	150ml	2023-10-23 11:20	Admin	OK

Single Sample Tracking: Patient and sample information can be viewed and filtered, using name, gender, freezing time, sample unique ID, with traceability down to location where a single sample is stored within a tank.

Sample ID	Device	Location	Volume	Status	Access Log	Notes
S-001	Device A	Lab 1	50ml	Issued	Admin	Initial setup
S-002	Device B	Lab 2	75ml	Withdrawn	Admin	Transfer to Lab 3
S-003	Device C	Lab 3	100ml	Issued	Admin	Batch production
S-004	Device D	Lab 4	125ml	Withdrawn	Admin	Quality check
S-005	Device E	Lab 5	150ml	Issued	Admin	Final storage

Sample Status: Book in deposit and withdrawal orders, select where to store a single sample, which samples to take out, and record all access statistics for tracability.



Simplified Visuals: Quickly view the temperatures, capacity, battery level, alarms. Simplified visual interface allows for devices can be remotely controlled and quickly located; features include remote single/batch unlocking, and "Find My Tank".

Device ID	Alert Type	Alert Time	Location	Alert Content	Resolution	Resolved
1001	Low Capacity	2023-10-26 10:00	Lab 1	Capacity below 20%	Replenished	Yes
1002	High Temp	2023-10-24 14:30	Lab 2	Temperature above 30°C	Adjusted	Yes
1003	Low Battery	2023-10-23 09:15	Lab 3	Battery level at 10%	Recharged	Yes
1004	Access Denied	2023-10-22 16:45	Lab 4	Unauthorized access attempt	Investigated	Yes
1005	Low Capacity	2023-10-21 11:20	Lab 5	Capacity below 10%	Replenished	Yes

Alert Information: You can view the alarm status of all devices, including the device name, alert time, location, alert content, if a notification has been issued, alarm history, and whether the alarm is resolved.

User	Device	Location	Access Time	Access Duration	Status
Admin	Device A	Lab 1	2023-10-27 10:00	15 min	Success
Admin	Device B	Lab 2	2023-10-26 14:30	20 min	Success
Admin	Device C	Lab 3	2023-10-25 09:15	10 min	Success
Admin	Device D	Lab 4	2023-10-24 16:45	5 min	Failure
Admin	Device E	Lab 5	2023-10-23 11:20	12 min	Success

User Management: Manage authorised users for all tanks in a central location. User names and passwords can be updated, deleted, and synced to all connected tanks.



Final appearance of features are subject to change; may vary depending on specific customer implementations, version of software and lab integrations.

Gelida 47 BaseStation System enables your lab to manage Gelida Ecosystem Cryostorage Tanks and precious samples, all within one centralised digital platform.



PRODUCT NAME	TYPE	CONFIGURATION
Gelida 47 BaseStation System	Package	Gelida BaseStation Software, Gelida BaseStation PDA; APP
Gelida 47 BaseStation Software Basic	Software	Software (Centralised management of devices)
Gelida 47 BaseStation Software Professional	Software	Software (Centralised management of devices and samples)
BaseStation PDA	Accessory	-

Please refer to the instructions for use.

For further information, please contact your Service Representative or visit:

www.geneabiomedx.com