



# Gelida

## INTELLIGENT INNOVATION OF LIQUID NITROGEN TANKS

**Gelida 47:** Intelligent, integrated liquid nitrogen storage ecosystem with 24/7 monitoring



# GELIDA 47

## Liquid Nitrogen Storage Ecosystem



Real-time monitoring for temperature and LN2



Instant audio, visual and digital alarms



Patient and sample tracking software enabling remote alarm



Mobile Tank Management with PDA & App



One or Two-Person Access Authentication



Centralised management via BaseStation software



### Model

Gelida 47 for Straws  
Gelida 47 for Vials

### Capacity

47 L (10 canisters  
/ 6 box racks)

### Net weight

Approx 30 kg

### Battery life

Min 10 days\*

### Touch screen

5 inch color  
touch display

### Storage temperature

-196° C Liquid Phase LN2

\*Note: Battery life may be longer depending on access frequency, alarms and battery health.

- **Enhanced Security:**

- Single or dual person authenticated tank access.
- Alerts via audio, visual and BaseStation App notification.
- Gelida 47 notifies you via SMS and/or Phonecall in case of an alarm when using the Basic software.

- **Peace of Mind:**

- Real time monitoring and reporting of tank fleet status with BaseStation.
- Automatic logging of tank access, alarms and warnings.

- **Connected Control:**

- Mobile management with PDA and App.
- Centrally manage storage via BaseStation link to Gelida Ecosystem devices.

- **Wireless:**

- Lid designed with quick swap battery, WiFi and integrated digital temperature sensors reducing external wiring.

- **Dual Sensors:**

- Two temperature sensors within the tank enables temperature monitoring and estimation of LN2 levels.

- **Convenience:**

- Touchscreen enables in person access, and quick recall tank condition and status.
- Gelida 47 displays the remaining liquid nitrogen level on the tank lid.
- Rolling wheel base with lockable wheels enables tank to be moved easily while full.



# GELIDA 47 CONFIGURATIONS

MODEL	GELIDA 47 (STRAWS)	GELIDA 47 (VIALS)
<b>Capacity (L)</b>	47	
<b>Bare weight</b>	30 +/- 3kg (66 Lbs)	
<b>Full weight</b>	~68 kg (158 Lbs)	
<b>Neck Diameter</b>	127 mm (5 inch)	
<b>Outer diameter</b>	Approx 540 mm (21.25 inch)	
<b>Height</b>	Approx 785 mm (30.9 inch)	
<b>Storage Container Type</b> For the straws, LxDiameter and vials DxWxH	Canister 278 x 72 mm 10.95 x 2.83 inch	Rack 5 boxes/rack Box Size 78 x 78 x 59 mm 3.07 x 3.07 x 2.32 inch
<b>Amount</b>	10	6
<b>Screen size</b>	5.0-inch colour 1280 × 720 capacitive multi touch	
<b>Power supply</b>	Battery: 5VDC Lithium Polymer Battery Charging Adapter: 100-240V~,50/60Hz,0.5A	
<b>Unlocking mode</b>	Digital password lock (single/dual authentication) Emergency access key	
<b>Operation log</b>	Automatic Recording	
<b>Alarms</b>	Abnormal temperature Low battery/loss of electricity Excessive tank open time	
<b>Mode of data transmission</b>	WiFi 802.11b/g/n AES-256 encryption algorithm	
<b>Number of temperature sensors</b>	2 High position and Low position within tank dewar	

PRODUCT NAME	TYPE	CONFIGURATION
<b>Gelida 47 (Straws)</b>	Instrument	10 Canisters
<b>Gelida 47 (Vials)</b>	Instrument	6 Racks
<b>Gelida 47 Battery</b>	Accessory	1 Spare Battery

Specifications for all markets are subject to regulatory approval and final product release.

# GELIDA 47 BASESTATION SYSTEM

## GELIDA BASESTATION SOFTWARE

All your cryotank information, visualised in one place. Centralised management and monitoring enables quickly view the temperatures, capacity, battery level, and alarms. Through the interface devices can be remotely controlled and located; features include remote single/batch unlocking, and find my tank.

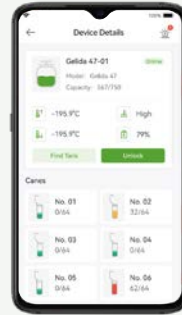
Through the interface, devices can be remotely controlled and located; features include remote single/batch unlocking and find my tank.



## BASESTATION APP

### Remote Monitoring & digitised alerts.

The BaseStation APP can be installed on Android mobile devices, enabling faster notification and response when abnormal conditions arise. Remotely view tank status, such as tank temperature, capacity, notification and alarm information.



## GELIDA BASESTATION PDA

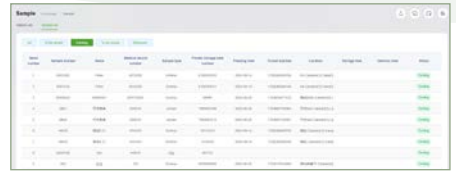
### BaseStation features in the palm of your hand.

The BaseStation PDA is a BaseStation Workstation you can take with you. Enabling all monitoring functions, but additionally adding tank control functions and sample management functionality. Create sample deposit and withdrawal orders, and identify sample location on the screen; the inbuilt precision saves time and supports error reduction efforts.

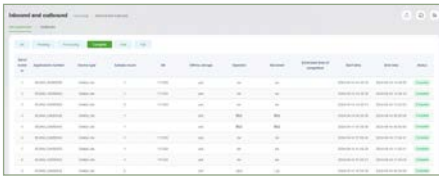




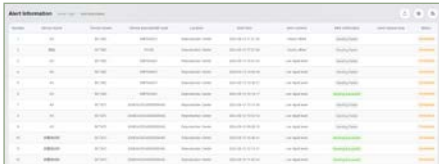
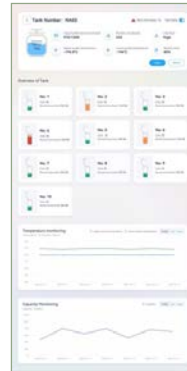
**Device Management:** Add, remove or edit basic device information, view tank capacity, tank status information, alarms, and retrieve access/operation records.



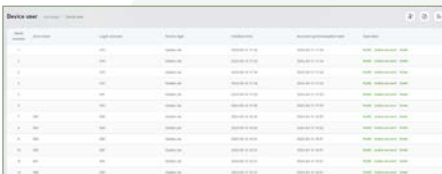
**Single Sample Tracking:** Patient and sample information can be viewed and filtered, using name, gender, freezing time, sample unique ID, with traceability down to location where a single sample is stored within a tank.



**Sample Status:** Book in deposit and withdrawal orders, select where to store a single sample, which samples to take out, and record all access statistics for tracability.



**Alert Information:** You can view the alarm status of all devices, including the device name, alert time, location, alert content, if a notification has been issued, alarm history, and whether the alarm is resolved. Gelida 47 notifies you via SMS in case of an alarm when using the Basic software.



**User Management:** Manage authorised users for all tanks in a central location. User names and passwords can be updated, deleted, and synced to all connected tanks.

**Simplified Visuals:** Quickly view the temperatures, capacity, battery level, alarms. Simplified visual interface allows for devices can be remotely controlled and quickly located; features include remote single/batch unlocking, and “Find My Tank”. Gelida 47 displays the remaining liquid nitrogen level on the tank lid.



Final appearance of features are subject to change; may vary depending on specific customer implementations, version of software and lab integrations.

**Gelida 47 BaseStation System** enables your lab to manage Gelida Ecosystem Cryostorage Tanks and precious samples, all within one centralised digital platform.



PRODUCT NAME	TYPE	CONFIGURATION
<b>Gelida BaseStation System</b>	Package	Gelida BaseStation Software, Gelida BaseStation PDA; APP
<b>Gelida BaseStation Basic</b>	Software	Centralised management + Monitoring Only
<b>Gelida BaseStation Pro</b>	Software	Centralised management + Monitoring with Cryoinventory Tracking
<b>BaseStation PDA</b>	Accessory	-

Please refer to the instructions for use.

For further information, please contact your Service Representative or visit:

**[www.geneabiomedx.com](http://www.geneabiomedx.com)**