



# Gelida

## INTELLIGENT INNOVATION OF LIQUID NITROGEN TANKS

**Gelida Lite:** Intelligent, integrated liquid nitrogen storage ecosystem with 24/7 monitoring



# GELIDA LITE

## Liquid Nitrogen Storage Ecosystem



Real-time monitoring for temperature and LN2



Instant audio, visual and digital alarms



Patient and sample tracking software enabling remote alarm



Mobile Tank Management with PDA & App



One or Two-Person Access Authentication



Centralised management via BaseStation software



### Model

Gelida Lite for Straws  
Gelida Lite for Vials

### Capacity

47 L (10 canisters  
/ 6 box racks)

### Net weight

Approx 20 kg

### Battery life

Up to 15 days

### Touch screen

5 inch color touch display

### Storage temperature

-196° C Liquid Phase LN2

- **Enhanced Security:**

- Single or dual person authenticated tank access.
- Alerts via audio, visual and BaseStation App notification.

- **Peace of Mind:**

- Real time monitoring and reporting of tank fleet status with BaseStation.
- Automatic logging of tank access, alarms and warnings.

- **Connected Control:**

- Mobile management with PDA and App.
- Centrally manage storage via BaseStation link to Gelida Ecosystem devices.

- **Wireless:**

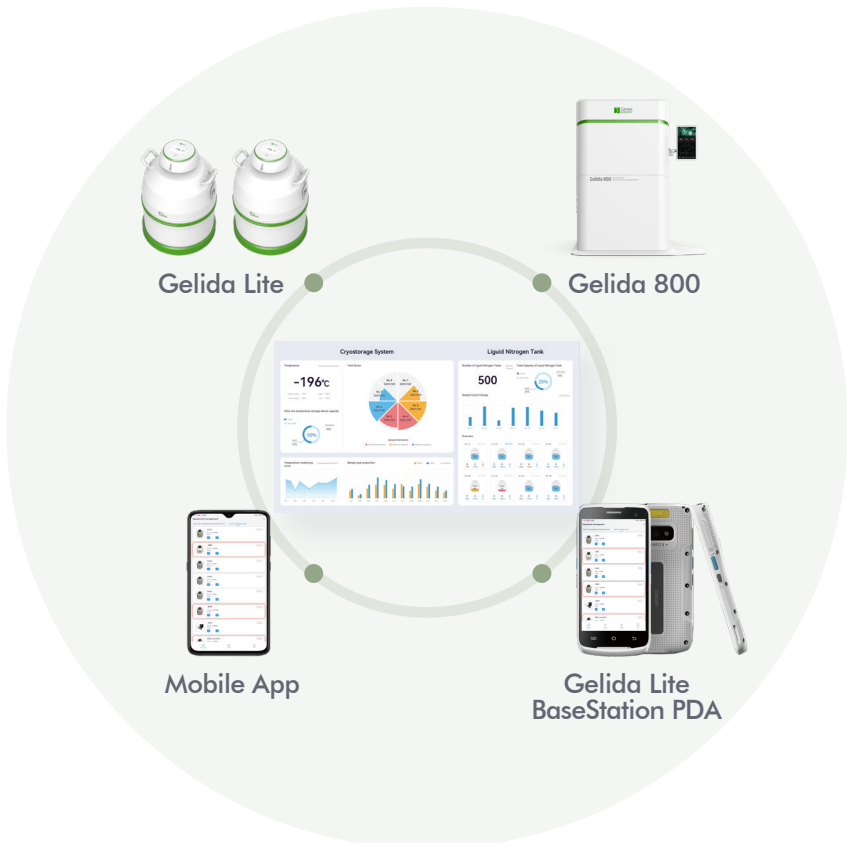
- Lid designed with quick swap battery, WiFi and integrated digital temperature sensors reducing external wiring.

- **Dual Sensors:**

- Two temperature sensors within the tank enables security and estimation of LN2 levels.

- **Convenience:**

- Touchscreen enables in person access, and quick recall tank condition and status.



# GELIDA LITE CONFIGURATIONS

MODEL	GELIDA LITE (STRAWES)	GELIDA LITE (VIALS)
<b>Capacity (L)</b>	47	
<b>Bare weight</b>	~20 kg (44 Lbs)	
<b>Full weight</b>	~58 kg (128 Lbs)	
<b>Neck Diameter</b>	127 mm (5 inch)	
<b>Outer diameter</b>	Approx 500 mm (19.685 inch)	
<b>Height</b>	Approx 710 mm (27.95 inch)	
<b>Storage Container Type</b> For the straws, LxDiameter and vials DxWxH	Canister 278 x 72 mm 10.95 x 2.83 inch	Rack Box Size 78 x 78 x 59 mm 3.07 x 3.07 x 2.32 inch
<b>Amount</b>	10	6
<b>Screen size</b>	5.0-inch colour 1280 × 720 capacitive multi touch	
<b>Power supply</b>	Battery: 5VDC Lithium Polymer Battery Charging Adapter: 100-240V~,50/60Hz,0.5A	
<b>Unlocking mode</b>	Digital password lock (single/dual authentication) Emergency access key	
<b>Operation log</b>	Automatic Recording	
<b>Alarms</b>	Abnormal temperature Low battery/loss of electricity Excessive tank open time	
<b>Mode of data transmission</b>	WiFi 802.11b/g/n AES-256 encryption algorithm	
<b>Number of temperature sensors</b>	2 High position and Low position within tank dewar	

PRODUCT NAME	TYPE	CONFIGURATION
<b>Gelida Lite (Straws)</b>	Instrument	10 Canisters
<b>Gelida Lite (Vials)</b>	Instrument	6 Racks
<b>Gelida Lite Charging Hub</b>	Instrument	Charging slots for up to 5 batteries
<b>Gelida Lite Battery</b>	Accessory	1 Spare Battery

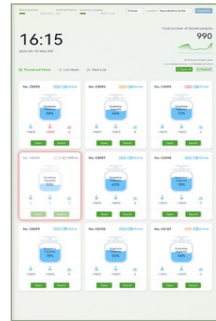
Specifications for USA market are subject to regulatory approval and final product release.

# GELIDA LITE BASESTATION SYSTEM

## GELIDA BASESTATION SOFTWARE

All your cryotank information, visualised in one place. Centralised management and monitoring enables quickly view the temperatures, capacity, battery level, and alarms. Through the interface devices can be remotely controlled and located; features include remote single/batch unlocking, and find my tank.

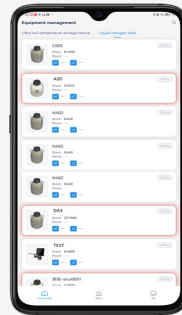
Through the interface, devices can be remotely controlled and located; features include remote single/batch unlocking and find my tank.



## BASESTATION APP

**Remote Monitoring & digitised alerts.**

The BaseStation APP can be installed on Android mobile devices, enabling faster notification and response when abnormal conditions arise. Remotely view tank status, such as tank temperature, capacity, notification and alarm information.



## GELIDA BASESTATION PDA

**BaseStation features in the palm of your hand.**

The BaseStation PDA is a BaseStation Workstation you can take with you. Enabling all monitoring functions, but additionally adding tank control functions and sample management functionality. Create sample deposit and withdrawal orders, and identify sample location on the screen; the inbuilt precision saves time and supports error reduction efforts.



Device	Device Name	Temp	Upper tank temperature (°C)	Lower tank temperature (°C)	Battery level	Location
1	8008	20.00	19.00	19.00	100%	Lab
2	8008	20.00	19.00	19.00	100%	Lab
3	8008	20.00	19.00	19.00	100%	Lab
4	8008	20.00	19.00	19.00	100%	Lab
5	8008	20.00	19.00	19.00	100%	Lab
6	8008	20.00	19.00	19.00	100%	Lab
7	8008	20.00	19.00	19.00	100%	Lab
8	8008	20.00	19.00	19.00	100%	Lab
9	8008	20.00	19.00	19.00	100%	Lab
10	8008	20.00	19.00	19.00	100%	Lab
11	8008	20.00	19.00	19.00	100%	Lab
12	8008	20.00	19.00	19.00	100%	Lab
13	8008	20.00	19.00	19.00	100%	Lab
14	8008	20.00	19.00	19.00	100%	Lab
15	8008	20.00	19.00	19.00	100%	Lab
16	8008	20.00	19.00	19.00	100%	Lab
17	8008	20.00	19.00	19.00	100%	Lab
18	8008	20.00	19.00	19.00	100%	Lab
19	8008	20.00	19.00	19.00	100%	Lab
20	8008	20.00	19.00	19.00	100%	Lab

**Device Management:** Add, remove or edit basic device information, view tank capacity, tank status information, alarms, and retrieve access/operation records.

Sample	Sample Name	Batch	Batch Code	Batch Date	Batch Time	Batch Location	Batch Status	Batch Type	Batch User	Batch Date	Batch Time	Batch Location	Batch Status	Batch Type	Batch User
1	8008	8008	8008	20.00	19.00	19.00	100%	Lab	Lab	20.00	19.00	19.00	100%	Lab	Lab
2	8008	8008	8008	20.00	19.00	19.00	100%	Lab	Lab	20.00	19.00	19.00	100%	Lab	Lab
3	8008	8008	8008	20.00	19.00	19.00	100%	Lab	Lab	20.00	19.00	19.00	100%	Lab	Lab
4	8008	8008	8008	20.00	19.00	19.00	100%	Lab	Lab	20.00	19.00	19.00	100%	Lab	Lab
5	8008	8008	8008	20.00	19.00	19.00	100%	Lab	Lab	20.00	19.00	19.00	100%	Lab	Lab
6	8008	8008	8008	20.00	19.00	19.00	100%	Lab	Lab	20.00	19.00	19.00	100%	Lab	Lab
7	8008	8008	8008	20.00	19.00	19.00	100%	Lab	Lab	20.00	19.00	19.00	100%	Lab	Lab
8	8008	8008	8008	20.00	19.00	19.00	100%	Lab	Lab	20.00	19.00	19.00	100%	Lab	Lab
9	8008	8008	8008	20.00	19.00	19.00	100%	Lab	Lab	20.00	19.00	19.00	100%	Lab	Lab
10	8008	8008	8008	20.00	19.00	19.00	100%	Lab	Lab	20.00	19.00	19.00	100%	Lab	Lab

**Single Sample Tracking:** Patient and sample information can be viewed and filtered, using name, gender, freezing time, sample unique ID, with traceability down to location where a single sample is stored within a tank.

Device	Device Name	Device Code	Device Type	Device Status	Device Location	Device Date	Device Time	Device Location	Device Status	Device Type	Device User	Device Date	Device Time	Device Location	Device Status	Device Type	Device User
1	8008	8008	8008	20.00	19.00	19.00	100%	Lab	Lab	20.00	19.00	19.00	100%	Lab	Lab	Lab	
2	8008	8008	8008	20.00	19.00	19.00	100%	Lab	Lab	20.00	19.00	19.00	100%	Lab	Lab	Lab	
3	8008	8008	8008	20.00	19.00	19.00	100%	Lab	Lab	20.00	19.00	19.00	100%	Lab	Lab	Lab	
4	8008	8008	8008	20.00	19.00	19.00	100%	Lab	Lab	20.00	19.00	19.00	100%	Lab	Lab	Lab	
5	8008	8008	8008	20.00	19.00	19.00	100%	Lab	Lab	20.00	19.00	19.00	100%	Lab	Lab	Lab	
6	8008	8008	8008	20.00	19.00	19.00	100%	Lab	Lab	20.00	19.00	19.00	100%	Lab	Lab	Lab	
7	8008	8008	8008	20.00	19.00	19.00	100%	Lab	Lab	20.00	19.00	19.00	100%	Lab	Lab	Lab	
8	8008	8008	8008	20.00	19.00	19.00	100%	Lab	Lab	20.00	19.00	19.00	100%	Lab	Lab	Lab	
9	8008	8008	8008	20.00	19.00	19.00	100%	Lab	Lab	20.00	19.00	19.00	100%	Lab	Lab	Lab	
10	8008	8008	8008	20.00	19.00	19.00	100%	Lab	Lab	20.00	19.00	19.00	100%	Lab	Lab	Lab	

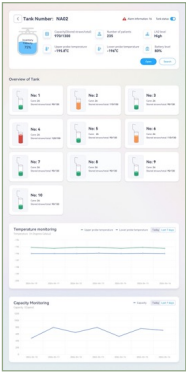
**Sample Status:** Book in deposit and withdrawal orders, select where to store a single sample, which samples to take out, and record all access statistics for tracability.

Device	Device Name	Device Code	Device Type	Device Status	Device Location	Device Date	Device Time	Device Location	Device Status	Device Type	Device User	Device Date	Device Time	Device Location	Device Status	Device Type	Device User
1	8008	8008	8008	20.00	19.00	19.00	100%	Lab	Lab	20.00	19.00	19.00	100%	Lab	Lab	Lab	
2	8008	8008	8008	20.00	19.00	19.00	100%	Lab	Lab	20.00	19.00	19.00	100%	Lab	Lab	Lab	
3	8008	8008	8008	20.00	19.00	19.00	100%	Lab	Lab	20.00	19.00	19.00	100%	Lab	Lab	Lab	
4	8008	8008	8008	20.00	19.00	19.00	100%	Lab	Lab	20.00	19.00	19.00	100%	Lab	Lab	Lab	
5	8008	8008	8008	20.00	19.00	19.00	100%	Lab	Lab	20.00	19.00	19.00	100%	Lab	Lab	Lab	
6	8008	8008	8008	20.00	19.00	19.00	100%	Lab	Lab	20.00	19.00	19.00	100%	Lab	Lab	Lab	
7	8008	8008	8008	20.00	19.00	19.00	100%	Lab	Lab	20.00	19.00	19.00	100%	Lab	Lab	Lab	
8	8008	8008	8008	20.00	19.00	19.00	100%	Lab	Lab	20.00	19.00	19.00	100%	Lab	Lab	Lab	
9	8008	8008	8008	20.00	19.00	19.00	100%	Lab	Lab	20.00	19.00	19.00	100%	Lab	Lab	Lab	
10	8008	8008	8008	20.00	19.00	19.00	100%	Lab	Lab	20.00	19.00	19.00	100%	Lab	Lab	Lab	

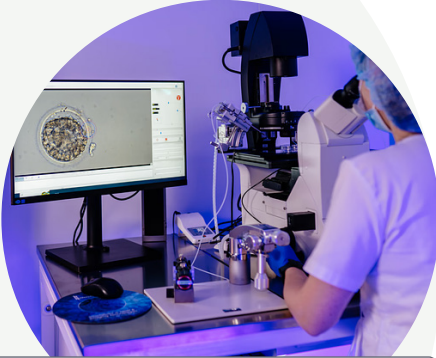
**Alert Information:** You can view the alarm status of all devices, including the device name, alert time, location, alert content, if a notification has been issued, alarm history, and whether the alarm is resolved.

Device	Device Name	Device Code	Device Type	Device Status	Device Location	Device Date	Device Time	Device Location	Device Status	Device Type	Device User	Device Date	Device Time	Device Location	Device Status	Device Type	Device User
1	8008	8008	8008	20.00	19.00	19.00	100%	Lab	Lab	20.00	19.00	19.00	100%	Lab	Lab	Lab	
2	8008	8008	8008	20.00	19.00	19.00	100%	Lab	Lab	20.00	19.00	19.00	100%	Lab	Lab	Lab	
3	8008	8008	8008	20.00	19.00	19.00	100%	Lab	Lab	20.00	19.00	19.00	100%	Lab	Lab	Lab	
4	8008	8008	8008	20.00	19.00	19.00	100%	Lab	Lab	20.00	19.00	19.00	100%	Lab	Lab	Lab	
5	8008	8008	8008	20.00	19.00	19.00	100%	Lab	Lab	20.00	19.00	19.00	100%	Lab	Lab	Lab	
6	8008	8008	8008	20.00	19.00	19.00	100%	Lab	Lab	20.00	19.00	19.00	100%	Lab	Lab	Lab	
7	8008	8008	8008	20.00	19.00	19.00	100%	Lab	Lab	20.00	19.00	19.00	100%	Lab	Lab	Lab	
8	8008	8008	8008	20.00	19.00	19.00	100%	Lab	Lab	20.00	19.00	19.00	100%	Lab	Lab	Lab	
9	8008	8008	8008	20.00	19.00	19.00	100%	Lab	Lab	20.00	19.00	19.00	100%	Lab	Lab	Lab	
10	8008	8008	8008	20.00	19.00	19.00	100%	Lab	Lab	20.00	19.00	19.00	100%	Lab	Lab	Lab	

**User Management:** Manage authorised users for all tanks in a central location. User names and passwords can be updated, deleted, and synced to all connected tanks.



**Simplified Visuals:** Quickly view the temperatures, capacity, battery level, alarms. Simplified visual interface allows for devices can be remotely controlled and quickly located; features include remote single/batch unlocking, and "Find My Tank".



Final appearance of features are subject to change; may vary depending on specific customer implementations, version of software and lab integrations.

**Gelida Lite BaseStation System** enables your lab to manage Gelida Ecosystem Cryostorage Tanks and precious samples, all within one centralised digital platform.



PRODUCT NAME	TYPE	CONFIGURATION
<b>Gelida Lite BaseStation System</b>	Package	Gelida BaseStation Software, Gelida BaseStation PDA; APP
<b>Gelida Lite BaseStation Software Basic</b>	Software	Software (Centralised management of devices)
<b>Gelida Lite BaseStation Software Professional</b>	Software	Software (Centralised management of devices and samples)
<b>BaseStation PDA</b>	Accessory	-

Discover more



Please refer to the instructions for use.

For further information, please contact your Service Representative or visit:

**[www.geneabiomedx.com](http://www.geneabiomedx.com)**